

State of Wyoming Corner Record

(In compliance with the *CORNER PERPETUATION AND FILING ACT*, Wyoming Statutes, 1997, Section 33-29-140, et. seq., and the Rules and Regulations of the Board of Registration for Professional Engineers and Professional Land Surveyors)

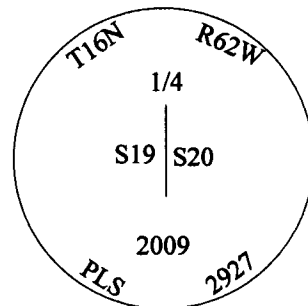
Reverse side of this form may be used if more space is needed.

Record of original survey and citation of source of historical information (if corner is lost or obliterated). Description of corner monumentation evidence found and/or monument and accessories established to perpetuate the location of this corner. Sketch of relative location of monument, accessories, and reference points with course and distance to adjacent corner(s) (if determined in this survey). Method and rationale for reestablishment of lost or obliterated corner.

For G.L.O. Record and Subsequent Records see previously filed State of Wyoming Corner Record filed March 3, 2003 @ Reception No. 345420.

The above mentioned State of Wyoming Corner Record indicates I set a No. 5 x 24 ins. rebar with 2 1/2 ins. diameter aluminum cap. The monument was removed during the construction phase of the Wyoming Department of Transportation Project No. 0C02-00(072) Burns North Road - North Section. Upon the completion of the construction phase of the project and at the request of the Wyoming Department of Transportation, I reset the above monument with a No. 5 x 24 ins. rebar with 3 1/4 ins. diameter brass cap marked as noted below, 0.05 ft. below the asphalt roadway.

Brass Cap Markings

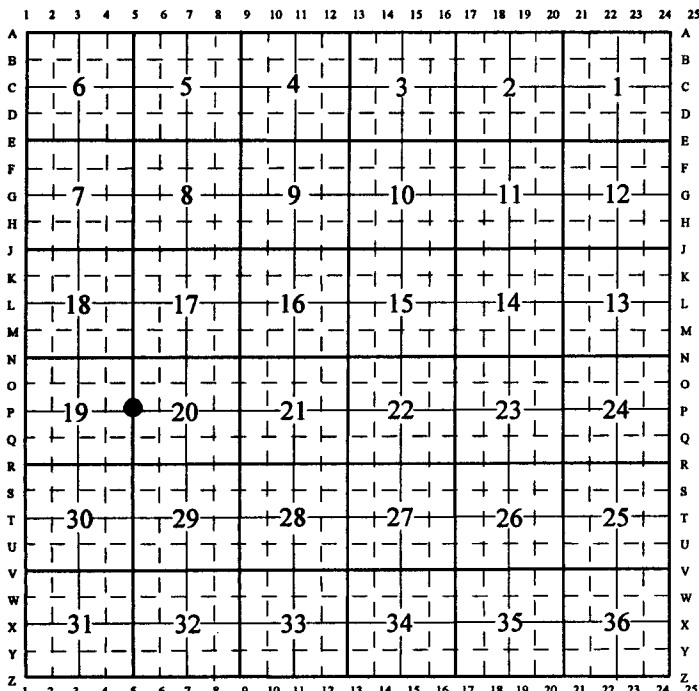


RECORDED 3/19/2009 AT 8:53 AM REC# 518597 BK# 2101 PG# 1132
 DEBRA K. LATHROP, CLERK OF LARAMIE COUNTY, WY PAGE 1 OF 1

Date of Field Work: February 12, 2009

Office Reference: Burns North Record of Survey

CROSS INDEX DIAGRAM

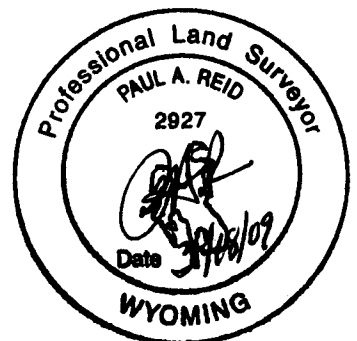


Firm/Agency, Address

Paul A. Reid, PLS
 1533 Pinion Drive
 Cheyenne WY
 Phone (307) 637-3400

This corner record was prepared by me or under my direction and supervision.

SEAL & SIGNATURE



Corner Name: West 1/4 Corner Section: 20 T.16 N., R. 62 W., 6th P.M., Cross-Index No.: P-5
 SBRPEPLS/PLSW: MARCH 1994/97